

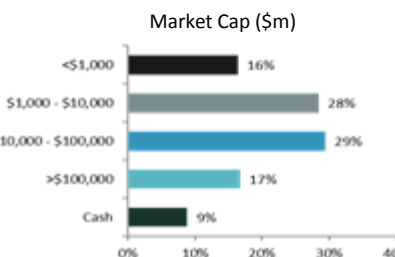
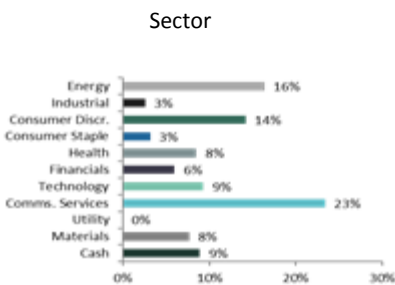
PERFORMANCE COMMENTARY

In December markets continued the quarter’s downward trend. Led by the US (down 9%), the MSCI World was down 7.5% in sterling terms. The Fund showed significantly less volatility than the market over the period and ended the month down 4.4%.

Our two gold miners had a strong month. Newmont was up 8% in December and Yamana was up 13%, helped by the upward trend in the gold price (to just short of \$1,300 per troy ounce by the end of December). With no significant gold finds in the last 15 years, gold production will remain under significant pressure, leaving low cost producers with assets in safe jurisdictions well positioned over the next 5 to 10 years. Across the two holdings, our gold miner exposure is c. 7.7% at the end of the year, and we expect this to remain uncorrelated to the rest of our portfolio (and to broader equity markets in general). We will always look for stocks that give less correlated returns, and possibly even positive returns when markets are decidedly negative. This diversification will help deliver a significantly more robust portfolio.

Negative sentiment remained extreme for all stocks exposed to the consumer, as retail sector results disappointed during the month. A profit warning from ASOS in mid-December sparked significant falls across the sector, as investors saw consumer tightening extending from purchases at physical stores to those made online. This impacted several stocks in our portfolio, with Next, Texwinca and Sky NZ all falling more than 15%. Cash flows from each of these businesses remains robust, and they all have leading positions in their local markets. Whilst there is risk in each of these investments, we see the shares as oversold, leading to an excellent investment opportunity. We remain confident in each investment and have retained our positions.

FUND POSITIONING



TOP 10 HOLDINGS

TOP 10 HOLDINGS	% FUND
NEWMONT MINING	6.5%
M1	5.3%
NEOPOST	5.0%
CHINA MOBILE	4.8%
BP	4.4%
EQUINOR	4.4%
ROYAL DUTCH SHELL	4.3%
MUNICH REINSURANCE	3.8%
YUE YUEN	3.7%
GLAXOSMITHKLINE	3.6%
Total Top Ten	45.8%
20 other holdings	45.3%
Cash	8.9%
Total	100.0%

PERFORMANCE (net of fees)*

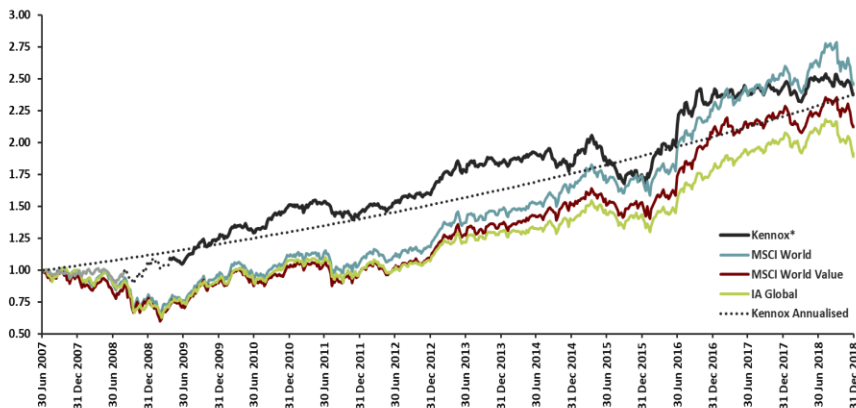
Inception (9/7/2007)	137.8%
UK Launch (30/4/2009)	119.2%
5 Years	29.2%
4 Years	30.7%
3 Years	36.1%
2 Years	0.2%
1 Year	-2.2%
YTD	-2.2%
3 Month	-6.2%
1 Month	-4.4%
Annualised:	
Inception	7.8%
UK Launch	8.4%

INVESTMENT TEAM

Charles L. Heenan CFA & Geoff Legg

Charles and Geoff have worked together as an investment team since the inception of the portfolio in July 2007. Both focus exclusively on the management of the Fund. They are fully aligned with investors, each having 100% of his investment in equities in the Fund.

RELATIVE PERFORMANCE



We focus on long-term, absolute performance, not on short-term relative returns.

We are not benchmarked.

Comparisons to the MSCI World, MSCI World Value and IA Global indices are for illustrative purposes only.

We would expect that Fund weightings (geographic, sector and market cap) may vary considerably from those of the MSCI and IA indices.

SINCE INCEPTION	Annualised Return	Sharpe ratio Annualised ⁺	Best Month	Worst Month	Volatility ⁺
Kennox (net of fees)*	7.8%	0.5	13.8%	-6.5%	10.6%
MSCI World Value	6.8%	0.3	10.2%	-11.5%	16.2%
MSCI World	8.2%	0.4	9.0%	-10.7%	15.6%
IA Global Sector	5.8%	0.3	9.0%	-12.6%	14.2%

ANNUAL DISCRETE	2017	2016	2015	2014	2013	2012	2011	2010	2009	2008	2007 (9/7/07)
Kennox* (net of fees)	2.5%	35.8%	-4.0%	-1.1%	15.5%	10.0%	-4.0%	21.1%	16.0%	9.8%	-2.1%
MSCI World Value	7.7%	35.1%	1.4%	11.0%	25%	11.2%	-4.4%	13.7%	15%	-18.2%	-4.3%
MSCI World	12.3%	29.1%	5.4%	12.2%	24.9%	11.3%	-4.5%	16.4%	18.1%	-18.8%	-0.4%
IA Global Sector	13.9%	23.9%	2.9%	7.0%	21.8%	9.7%	-9.3%	15.8%	23.0%	-24.3%	-0.1%

Track Record Description & Methodology

* The portfolio was launched in July 2007 ("Inception") in Australia as the Contrarian Global Value Fund. The Kennox investment team ran that fund from launch until September 2008. The Kennox Strategic Value Fund was launched in April 2009, comprising 19 of the 20 positions that existed in the Australia fund. We have assumed a static portfolio for the interim period.

Performance shown reflects total return of the Institutional Share class. Performance figures are generated from the accumulation shares since their launch on 29 April 2013. Prior to that performance figures are taken from an alternative share class, adjusted to reflect a 1.0% management fee throughout.

+ Sharpe Ratio is calculated as annualised return divided by the standard deviation of the excess return over the Libor 3m Bond yield.

+ Volatility is calculated as the standard deviation of the natural log returns multiplied by the square root of the periodicity of the returns.

Performance figures shown are total return with data for Kennox and the MSCI provided by Kennox/Bloomberg and IA Global data provided by Morningstar

3 SHARE CLASSES (Income & accumulation)	Investment Management Fee	Minimum Initial Investment	GBP (pence)	OCF	Sedol	ISIN
Professional Income	1.3%	£20,000	121.6	1.44%	B2R8FY9	GB00B2R8FY91
Professional Accumulation	1.3%	£20,000	136.6	1.44%	B9DH0K0	GB00B9DH0K00
Institutional Income	1.0%	£2m	122.9	1.14%	B3YDJ20	GB00B3YDJ200
Institutional Accumulation	1.0%	£2m	140.6	1.14%	B8Y8GR4	GB00B8Y8GR43
Class A Income	0.80%	£20m	123.0	0.94%	B9D9Z90	GB00B9D9Z904
Class A Accumulation	0.80%	£20m	142.0	0.94%	B9B3CY8	GB00B9B3CY80

FUND DETAILS

Fund Managers	Charles L. Heenan, Geoff Legg
Investment Universe	Listed securities on any globally recognised stock exchange, bonds and cash
Target Asset Allocation	80-100% equities; 0-20% cash
Fund Status	UK OEIC; UCITS
IA Sector	Global Equity
Benchmark	The Fund is not benchmarked
Inception Date	July 2007; UK Fund launched in April 2009
Fund Size	£220 Million
ISable Fund	Yes
Pricing	Daily at 1200
Dilution Adjustment	A dilution adjustment may apply on orders greater than 5% of AUM

TO DEAL IN THE FUND

All dealing is through our Transfer Agency:
 Smith & Williamson Fund Administration Ltd
 Tel: 0141 222 1150
 Fax: 0207 131 8261
SWFAdealing@smithandwilliamson.com
 206 St Vincent Street, Glasgow G2 5SG

Application forms, the Fund prospectus and KIIDs are available on our website:
www.kennox.co.uk/investing-fund

Performance Tracking

www.kennox.co.uk/performance

TO CONTACT KENNOX

Income Share	Income distributed semi-annually
Ex-Dividend Dates	Y/E: 1 October Interim: 1 April
Distribution Payment Dates	Y/E: 30 November Interim: 31 May
Dividend Yield (net of fees)	Professional: 2.4% Institutional: 2.8% Class A: 3.0%
Registrar	Smith & Williamson Fund Administration Limited
Depository	National Westminster Bank Plc;
Custodian	Bank of New York Mellon
Auditor	KPMG

Kennox Asset Management
 28 Drumsheugh Gardens
 Edinburgh, EH3 7RN

+44 (0)131 563 5440
enquiries@kennox.co.uk
www.kennox.co.uk

Important Information

The information in this document does not constitute, or form part of, any offer to sell or issue, or any offer to purchase or subscribe for shares, nor shall this document or any part of it or the fact of its distribution form the basis of or be relied on in connection with any contract. Interests in any investment funds managed by Kennox Asset Management will be offered and sold only pursuant to the prospectus relating to such funds.

The Kennox Strategic Value Fund ("Fund") should be considered a long-term investment. You should be aware that the Fund is permitted to invest in markets which are not as well developed or regulated as the UK. As such, investments in those markets may be less liquid, and may have less reliable custody arrangements. Therefore, they may be prone to above average volatility and carry more risk. Where investments are made in smaller companies, these companies' shares may be less liquid than larger companies and the price swings may therefore be greater. You should remember that the value of investments and the income derived therefrom may fall as well as rise and you may not get back the amount that you invest. Past performance is not a guide to future returns.

The Fund is denominated in £ sterling. You should be aware that if sterling appreciates or depreciates against the currencies in which investments are made, this could have an effect on the value of your investment. An investment in the Fund carries a degree of risk and retail investors should seek professional advice before investing in the Fund. Kennox has not taken any steps to ensure that the securities referred to in this document are suitable for any particular investor and no assurance can be given that the stated investment objectives will be achieved.